

WIRELESS AC CURRENT SENSOR SYSTEMS SCT-125W/200W SERIES SPLIT CORE

Description:

Magnelab's SCT-125W/200W Series are Radio CT systems designed to work with any energy meter that accepts 0.333 V RMS or 1 V RMS transducers. Each CT contains an RF link powered by the measured current and will link to the Controller (PT Unit) at any current above 5 A. The system consists of three matched CTs and a Controller with three outputs for A, B and C phase. CT installation consists of simply snapping the CTs around each conductor. The controller is powered by 120 VAC or 240 VAC. The outputs can be wired to the energy meter CT inputs

Features:

- Linearity accuracy: $\pm 1\%$
- Phase angle $< 1^\circ$ measured at rated current
- 10 meter range
- 1 V RMS or 1/3 V RMS Out
- UL Pending, CE Mark



Benefits:

- CTs powered by harvested energy
- No CT wiring required
- Easy installation - just snap CTs on
- Accurate for both phase and current

SYSTEM SPECIFICATIONS

COMMUNICATION: 802.15.4, 2.4 GHz technology

ACCURACY: Better than 1% for both amplitude and phase throughout range.

RANGE: 10 meters

DISPLAY: Green LED for each of three channels

PT UNIT POWER: 120 VAC or 240 VAC

OUTPUT: A, B & C phase, 0.333 Volt or 1 Volt (Optional at time of ordering)

MINIMUM TURN-ON: 5 A measured current

CHANNELS: 15 selectable by installer

TEMPERATURE: -30°C to $+60^\circ\text{C}$

FCC PT 15, subpart C, Class A (industrial and broadcasting systems)

PART NUMBER AND RATING

SCT-125W-070	70 Amp	SCT-200W-100	100 Amp
SCT-125W-100	100 Amp	SCT-200W-200	200 Amp
SCT-125W-150	150 Amp	SCT-200W-400	400 Amp
SCT-125W-200	200 Amp	SCT-200W-600	600 Amp
SCT-125W-250	250 Amp	SCT-200W-800	800 Amp
SCT-125W-300	300 Amp	SCT-200W-1000	1000 Amp
SCT-125W-400	400 Amp	SCT-200W-1200	1200 Amp
SCT-125W-800	800 Amp	SCT-200W-1500	1500 Amp

Magnelab, Inc.
600 Weaver Park Rd
Longmont, CO 80501
Tel. (303) 772-9100
Fax. (303) 772-9400
Email. info@magnelab.com

SPLIT CORE CURRENT SENSORS (SCT UNITS)

Magnelab's SCT-W Series split-core current sensors "sense" AC current up to 1500 Amps passing through the measured conductor. Power for SCT communication is harvested from the measured current. No external wiring for power is needed. Replacing SCTs is simple and can be performed in the field. The SCT series have a patented self-locking mechanism that minimizes measurement errors.

CONTROLLER (PT UNIT)

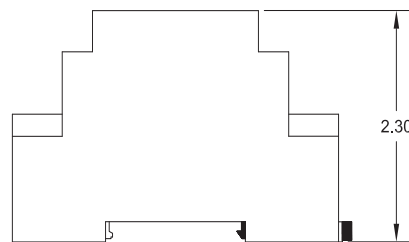
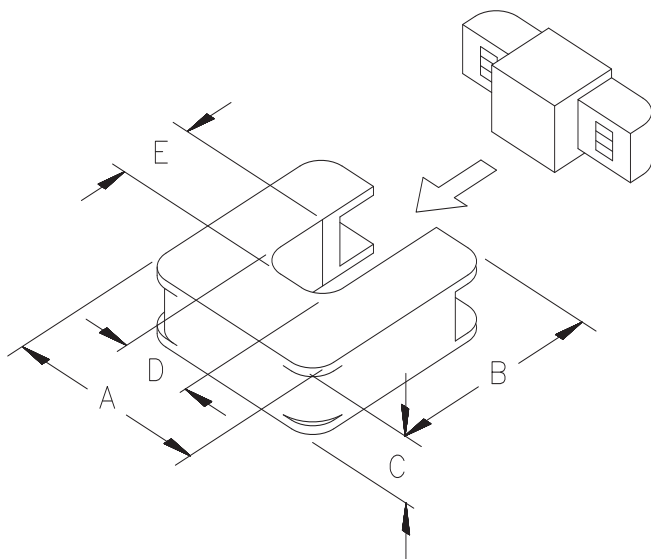
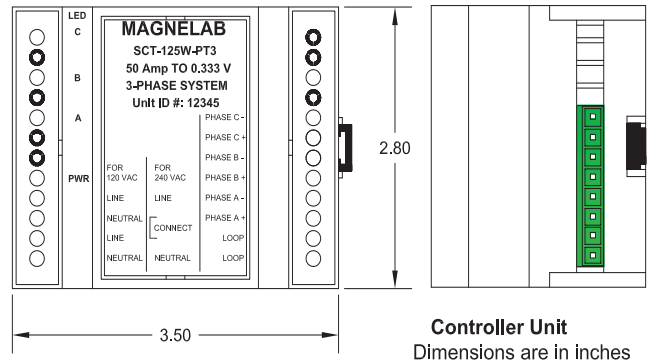
The controller is powered by 120/240 VAC and provides three outputs that correspond to the three remote CTs in both amplitude and phase.

The unit can be mounted on DIN Rail TH35

Dimensions are 35mm X 25mm X 7.5mm.



DIMENSIONS CHART	SCT-125W	SCT-200W
A	3.25	4.75
B	3.35	5.00
C	1.00	1.20
D	1.25	2.00
E	1.25	2.00



RoHS

CE ISO -9001 - 2008